

# ASTRONAUT

OUT-OF-THIS-WORLD EXHIBIT LAUNCHES AT THE SOUTH FLORIDA SCIENCE CENTER AND AQUARIUM

Visitors at the South Florida Science Center and Aquarium are over the moon about the newest blockbuster exhibit, *Astronaut*.

"We're open to the public and thrilled to offer an out-of-this-world experience," said **Lew Crampton**, President and CEO of the Science Center. "On display until April 22, 2018, the exhibit is a space lab full of science fun."

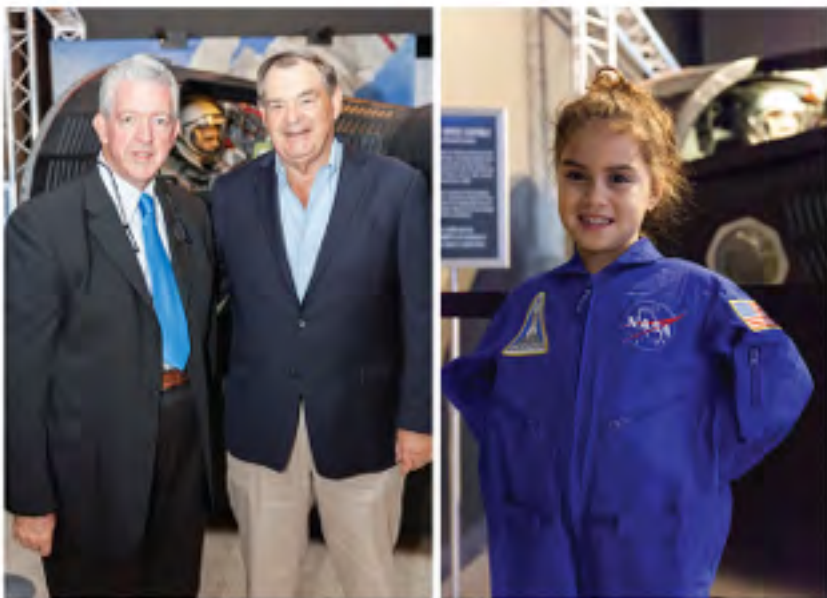
*Astronaut* boasts 26 hands-on, interactive exhibits which relay the physical and psychological effects of living in microgravity and the technology required to complete space missions.

The immersive experience surrounds guests with life-sized living quarters necessary to survive outside of Earth's atmosphere. Anyone who has ever wondered what it is like to sleep, eat, shower and use the toilet in space will get their questions answered at this blockbuster exhibit. Visitors will also experience the importance of science in space and the future of space exploration.

"This exhibit really makes you feel like you're in the International Space Station, and it's incredible," said Crampton. "You don't have to be a space junkie to have fun, and there's something for everyone, old and young. We are thrilled to be able to open every mind to science and host *Astronaut* for an extra-terrestrial experience for families."

The mission of the South Florida Science Center and Aquarium is to "open every mind to science" and the indoor/outdoor venue features more than 100 hands-on educational exhibits, a 10,000 gallon fresh and salt water aquarium — featuring both local and exotic marine life, a digital planetarium, conservation research station, Florida exhibit hall, Pre-K focused *Discovery Center*, an interactive Everglades exhibit and the 18-hole *Conservation Course* — an outdoor putting course with science-focused education stations.

For information visit [www.sfsccenter.org](http://www.sfsccenter.org) or call 561.832.1988.



**TOP ROW:** Glenn Jergensen and Lew Crampton; Girl wears space suit; **MIDDLE ROW:** Students from Northboro Elementary experience launching; **BOTTOM ROW:** Student from Northboro Elementary tries out sleeping bag; Northboro Elementary Students take turns launching parachute



# Ladies' Night Out

## Tuesday, August 15, 2017

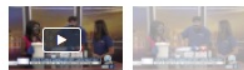
<http://www.wptv.com/about-us/as-seen-on/south-florida-science-centers-ladies-night-out-on-aug-18>

### South Florida Science Center's Ladies Night Out on Aug. 18

POSTED: 12:44 PM, Aug 15, 2017



+SHOW CAPTION



Calling all science-savvy ladies! You and your girls are invited to mix and mingle at the South Florida Science Center on Aug. 18 from 6 p.m. to 9 p.m. for a [Ladies Night Out](#).

Ticket are \$10 in advance and \$15 for the day of the event.



# MolecuBar

## November 2, 2016

<https://www.wptv.com/about-us/as-seen-on/molecubar-at-south-florida-science-center>



WEATHER TRAFFIC ALL SECTIONS +

## 'MolecuBar' at South Florida Science Center

POSTED: 12:36 PM, Nov 2, 2016

UPDATED: 12:36 PM, Nov 2, 2016



Autoplay: On

VIDEO BY WPTV

+SHOW CAPTION





**HOLIDAY FOOD DRIVE:**  
Wellington residents asked to contribute **PAGE 4**

## SOUTH FLORIDA SCIENCE CENTER AND AQUARIUM

# OUT OF THIS WORLD

How exactly do astronauts live and work in space? The South Florida Science Center tackles these questions with a new hands-on immersive exhibit titled, "Astronaut."



*Photo by Robert Harris/Palms West Monthly*  
Nathan San, 5, from West Palm Beach, sees what it's like to don a flight suit and train as an astronaut at the South Florida Science Center and Aquarium's newest exhibit, "Astronaut," which runs through April 22.

By **MARY THURWAGHTER**  
*Palms West Monthly*

**WEST PALM BEACH** — Mark Patten V found himself dwarfed by the large space ship control panel in front of him. The monitor's first message read "Houston, we've had a problem."

But the Palm Beach Gardens boy wasn't the least bit bothered. At 2½ years old, he couldn't read it anyway. He didn't know that cabin pressure was low or that the temperature aboard the vessel was too high. All he knew was that the interactive exhibit was a fun toy with colored lights, one he didn't want to share with his twin sister Gabriella, who muscled in to test the exhibit for herself.

"They're really enjoying this," said Erika Patten, their mother. The family was among the first to view "Astronaut," the latest exhibition at the South Florida Science Center and Aquarium in West Palm Beach. The exhibit, which opened Oct. 14, continues through April 22.

"This exhibit really makes you feel like you're in the International Space Station, and it's incredible," said Lew Crampton, president and CEO of the Science Center. "You don't have to be a space junkie to have fun, and there's something for everyone, old and young."

With hands-on and full-body displays, the science exhibition investigates the reality of what it takes to be a space explorer. It includes 26 hands-on exhibits to relay the physical and psychological effects of living in microgravity on the human body and the technology used to complete a mission.

Anyone who has ever wondered what it's like to live like an astronaut can find out by seeing this show. Visitors will gain insight into the physical and mental challenges of living and working in space, experience a rocket launch and explore life on the Space Lab.

Kids of all ages will find out how astronauts exercise (strapped to a stationary

### IF YOU GO:

**WHAT:** "Astronaut." An immersive, out-of-this-world experience that surrounds guests with life outside Earth's atmosphere. Anyone who has ever wondered what it's like to sleep, eat, shower and use the toilet in space will get their questions answered at this exhibit. Visitors will also experience the importance of science in space and the future of space exploration.

**WHERE:** The South Florida Science Center and Aquarium, 4801 Dreher Trail North, West Palm Beach.

**WHEN:** The exhibit runs through April 22.

**COST:** Admission is \$16.95 for adults; \$14.95 for seniors; \$12.95 for children 3-12; and free for members and children under 3.

**MORE INFO:** Call The South Florida Science Center at (561) 832-1988 or go online to [stsciencenter.org](http://stsciencenter.org).

bicycle), sleep (tucked into a vertical sleeping bag) and how they go to the bathroom in zero gravity. Visitors also can examine their eyesight and perform strength tests like astronauts do during and after a space flight.

Tyler Schulte, 3½, of Boynton Beach, spun around in a self-propelled space capsule and learned that you can spin around a bunch in space and not be dizzy — but that wasn't enough to convince a few skeptical grown-ups watching nearby.

What astronauts eat is also examined and guests will learn that food — chosen for taste, nutrition and shelf life — can easily float away. Favorites include nuts and cookies that need no special preparation, and dehydrated spinach and macaroni and cheese that only need water added before consuming. For those who want to know what space treats taste like, a visit to the gift shop for a dehydrated ice cream sandwich will prove satisfying.

In the exhibit's training zone, visitors learn about some of the challenges involved in becoming an astronaut. They can try their hand at assembling nuts and bolts while wearing bulky space gloves, complete a successful mission and even try to overcome G-forces.

A live feed shows astronauts aboard the International Space Station during their daily routines.

"The Science Center has cultivated partnerships with local retired astronauts, and we are thrilled to team up with them to add their personal journeys to the exhibit," Crampton said. "They are excited to serve as guest lecturers throughout the display and share their unique knowledge and experiences with guests."

Before coming to West Palm Beach, "Astronaut" was shown in Houston, Texas. The show was produced by Imagine Exhibitions and designed by Scitech of

**SEE ASTRONAUT / PAGE 4**



## Palms Beach Opera celebrates season

As part of celebrations for its upcoming season, Palm Beach Opera held a private dinner at The Lotus Club in New York, hosted by Palm Beach Opera board member Florence Kaufman.

**PAGE 12**

## PBSC selects site for dental building

Palm Beach State College will build its new Dental and Medical Services Technology building on its Loxahatchee Groves campus.

**PAGE 6**



## "Little Foxes" opens at Dramaworks

Palm Beach Dramaworks opens its season with Lillian Hellman's classic "The Little Foxes," which continues through Nov. 12 at the Don and Ann Brown Theatre in downtown West Palm Beach.

**PAGE 13**

## It's all about teenagers in RPB

Teenagers now have a night all to themselves as the Village of Royal Palm Beach hosts Battle of the Bands & Teen Night on Nov. 17 at Royal Palm Beach Commons Park.

**PAGE 5**



## Local Happenings

### Wellington residents asked to contribute to holiday food drive

Help make the holidays bright for families in need this year by contributing to the Village of Wellington's Hometown Holiday Food Drive.

Wellington wants to make sure no village resident goes without a hot meal this Thanksgiving. Donations are being accepted now through Friday, Nov. 17, and residents



are asked to contribute food items such as boxed mashed potatoes, boxed stuffing mix, cornbread mix, cranberry sauce, turkey gravy and canned vegetables. All food donations will go directly to local families in need. Food may be dropped off

at Village Hall, 12300 Forest Hill Blvd.; Village Park, 11700 Pierson Rd.; or the Wellington Community Center, 12150 Forest Hill Blvd.

Wellington residents looking for assistance may contact Gregg Harr with Christ Community Church at (561) 307-2900 or their local house of worship. All requests must be made prior to noon on Nov. 15.

### Town hall meeting on State Road 7 expansion to be held Nov. 1 in WPB

If you have questions or concerns regarding the proposed extension to State Road 7, be sure to attend the town hall meeting Wednesday, Nov. 1,

presented by State Rep. Matt Wilhite and Palm Beach County Commissioner Melissa McKinley.

The meeting will run from 6:30 to 8:30 p.m. at the Vista Center, 2300 N. Jog Rd. in West Palm Beach.

For more information, call (561) 791-4071.

### Tickets still available for murder mystery dinner theater

The Village of Wellington's popular Murder Mystery Dinner Theater makes its return Saturday, Nov. 4, at the Wellington Community Center featuring the theme, "Murder at the High School Reunion."

The event features actors portraying characters at their 1987 class reunion. When a mysterious murder occurs, it's up to each guest to piece together the clues and identify the suspect. Attendees are encouraged to dress in 1980s attire. Prizes will be awarded at the end of the evening.

Tickets are \$60 per person and are on sale now at Village Park, 11700 Pierson Rd., and the Wellington Community Center, 12150 Forest Hill Blvd. A table for eight can be purchased for a discounted price of \$420. Tickets include dinner, beer and wine. As this is an adult-themed event, Wellington will provide free on-site child care for children ages 5 to 12, including pizza and plenty of fun activities. The child care room will be separate from the event.

Doors open at 5:30 p.m. The event is expected to sell

out, so be sure to reserve your seats early. For more information, go online to [wellingtonfl.gov/MurderMystery](http://wellingtonfl.gov/MurderMystery).

### 14th Annual Turkey Shoot returns to West Palm Beach

It's time for the 14th Annual Turkey Shoot Contest—a festive holiday event with games and activities such as a family free-throw shooting contest, arts & crafts, turkey sack races and turkey pop, in which participants can compete for prizes.

The annual event, open to area residents ages two and older, takes place Thursday, Nov. 9 from 6 to 8 p.m. at Westgate Park and Recreation Center, 3691 Oswego Ave. in West Palm Beach.

Sign-up for events begins at 5:30 p.m. and all events are free to enter. For more information, call (561) 694-5455.

### Village of Royal Palm Beach to honor Veterans on Nov. 11

Come out and join the Village of Royal Palm Beach as they salute all U.S. veterans Saturday, Nov. 11 beginning at 6 p.m. at the Veterans Park Amphitheater on Royal Palm Beach Blvd.

A flag-raising ceremony will be followed by a motivational presentation. Attendees will enjoy free refreshments and a live musical performance provided by the Royal Palm Beach Community Band following the ceremony.

Veterans attending the ceremony who wish to be recognized may contact the sporting center at (561) 753-1232 to be added to the list.

### Learn about spicing up your yard with native plants

Learn how to add beauty to your yard with South Florida native plants when Mounts Botanical Garden of Palm Beach County hosts a workshop featuring local expert Jeff Nurge.

Nurge will discuss the selection and placement of Florida native plants to maximize their beauty using the principles of texture, color and hardscape, while also minimizing the use of water and pesticides. Attendees also will review best practices for maintaining native

CONTINUED ON NEXT PAGE

# TEEN EVENT & BATTLE OF THE BANDS

**FAMILY FUN EVENT WITH LIVE INTERACTIVE DJ**

**TEEN FUN ZONE**  
RIDE, GAMES, AND ACTIVITIES  
SS BRACELET REQUIRED.

**FOOD TRUCK INVASION**

**FIELD GAMES**  
PROVIDED BY  
**CRAZY GAMES**

**INTERACTIVE SPORT GAMES**  
DONORS OF ROYAL PALM BEACH COMMONS YOUTH PROVIDERS:

- RPB YOUTH BASEBALL
- RPB POP WARNER
- TACKLE FOOTBALL
- RPB SOCCER
- AND
- SAVON'S ACADEMY STARS - BASKETBALL

**FRIDAY NOVEMBER 17TH**  
**5PM-9:30PM**

**ROYAL PALM BEACH COMMONS PARK AMPHITHEATER**

**\$250 GRAND PRIZE**  
AND WILL BE FEATURED AT A RPB FUTURE SPECIAL EVENT CONCERT.

**STARTS @ 7PM FOR AGES 13-19**

SUBMIT A PROMO VIDEO SINGLE SONG ALONG WITH REGISTRATION FORM TO BE ENTERED IN THE CONTEST.

**RAFFLE PRIZES**

**COMMONS PARK**

**BANDS REGISTER AT COMMONS PARK**

11600 POINCIANA BLVD., ROYAL PALM BEACH, FL 33411  
OR VISIT [WWW.ROYALPALMBEACH.COM](http://WWW.ROYALPALMBEACH.COM)

**BAND REGISTRATION DEADLINE IS NOVEMBER 3, 2017**  
FOR ADDITIONAL DETAILS, PLEASE CONTACT 561-793-1232  
OR EMAIL [RWRIGHT@ROYALPALMBEACH.COM](mailto:RWRIGHT@ROYALPALMBEACH.COM)

### Science Center to host space-themed family sleepover

ASTRONAUT / FROM PAGE 1

Perth, Australia, with the help of NASA.

Families who want to spend more time learning about space can take part in a sleepover at the science center that will take place on Nov. 11. The event includes astronomy arts and crafts demonstrations, a planetarium show, stargazing through high powered telescopes and space explorer training.

Tickets for the sleepover are \$40 (\$30 for members). Pre-registration is required by calling (561) 832-2026. ■

## Palms West Monthly

Neighborhood News Group Inc.

MAILING ADDRESS: 125 S. State Road 7, Suite 104-364, Wellington, Fla. 33414

PHONE: 561.329.5593 | WEBSITE: [PalmsWestMonthly.com](http://PalmsWestMonthly.com)

Help us spread the word  
[facebook.com/PalmsWestMonthly](https://www.facebook.com/PalmsWestMonthly)

### SEND US AN EMAIL:

Send press releases, photos and announcements to [newsdesk@PalmsWestMonthly.com](mailto:newsdesk@PalmsWestMonthly.com). Send letters to the Editor to [letters@PalmsWestMonthly.com](mailto:letters@PalmsWestMonthly.com).

### ADVERTISE:

For information on advertising, call Mariela Harris at 561.329.5593 or send an email to [ads@PalmsWestMonthly.com](mailto:ads@PalmsWestMonthly.com).

Advertisers may also obtain ad rates and production schedules online by clicking on MEDIA KIT at [PalmsWestMonthly.com](http://PalmsWestMonthly.com).

### WHO WE ARE:

**Publisher/Managing Editor:** Robert Harris

**Writers:** Ron Hayes, Mary Tharwachler, Michelle Kaplan, Aaron Wormus, Ernie Zimmerman

**Photographers:** Elizabeth Banks, Robert Harris, Alan Luby | **Advertising:** Mariela Harris

**Office Manager:** Mariela Harris

Palms West Monthly is published the last Monday of every month and is distributed throughout the Western Communities and Greater West Palm Beach. Views and opinions that are expressed in articles and columns are those of the author, and do not necessarily represent the opinions of the publisher. All rights reserved.

Letters from readers are welcome. All letters must include the writer's name, phone number and address to be considered for publication. Please limit letters to 700 words or less.





Mary Freitas,  
Caroline Rafferty  
and Elizabeth Gordon



Mary and Mark Freitas



Nicholas  
and Caroline  
Rafferty



Matt Lorentzen and Dr. Michio Kaku

## The Future of the Mind

Uploading memories and sending emotions through a text message sounds like science fiction, but these were just a few of the topics highlighted at **The South Florida Science Center and Aquarium's (SFSCA) annual benefit *The Future of the Mind - An Evening with Dr. Michio Kaku and the Scientific Quest to Understand, Enhance, and Empower the Mind.* Mary Freitas, Elizabeth Gordon and Caroline Rafferty chaired the event.**

More than 200 guests enjoyed the lively and interactive discussion by renowned scientist and author, **Dr. Michio Kaku**. During opening remarks, SFSCA Board Chairman **Matt Lorentzen** unveiled plans to name the entrance of the Science Center the **Law and Kathleen Crampton Science Exploration Gateway** to honor President and CEO **Law Crampton's** work over the last seven years.

"I am beyond excited for the future of the Science Center, and this benefit is opening up new possibilities that we have been dreaming about to open every mind to science," Crampton said.

The benefit kicked off fundraising for the Science Center's latest expansion, a permanent exhibit called **A Journey Through The Human Brain**. The Science Center is teaming up with the **Florida Atlantic University's Brain Institute** to make this plan happen.

"This exhibit is exciting because we have to energize young people and fire up their curiosity about the brain," said Dr. Kaku. "All of us, sitting on our shoulders, have the most advanced object in the known universe - the brain. We're entering the golden age of decoding thoughts, and we want young people to understand this."

Major Sponsors of *The Future of the Mind - An Evening with Michio Kaku and the Scientific Quest to Understand, Enhance, and Empower the Mind* included **Mr. and Mrs. Lew Crampton, Mr. and Mrs. Jeffrey Fisher, Mr. and Mrs. Matt Lorentzen, Mr. and Mrs. John Niblack, Mr. and Mrs. Bob Stiller, Mr. and Mrs. Mark Freitas, Mr. and Mrs. Benjamin Gordon, Mr. and Mrs. Nicholas Rafferty, PNC Bank, KLX, Inc., The Stiles Nicholson Foundation, Modernizing Medicine, Mr. and Mrs. Robb Allan, Mr. and Mrs. Rick Stone, Drs. Bonnie and Kenneth Davis, Mr. Dave Nuti and Mr. and Mrs. James McCann.**

For more information on the new brain exhibit or other Science Center programming call 561.832.1988 or visit [www.sfsciencecenter.org](http://www.sfsciencecenter.org). PHOTOS: CAPEHART



Heidi and John Niblack



Juliana Gopdelman and  
Frances Fisher



Lew Crampton and Dr. Randy Blahely



Capt. Robert and  
Pandora Crippen



PALM BEACH  
*Society*

MARCH 3-9, 2017

Lew and Kathleen  
Crampton with  
Frances Fisher and  
Page Lee Huffly



SOUTH FLORIDA SCIENCE CENTER AND AQUARIUM'S

**Metamorphosis Into The Future**





SOUTH FLORIDA SCIENCE CENTER AND AQUARIUM'S

## Metamorphosis Into The Future Includes Backyard Expansion

Picture your dream backyard with a place to watch movies, play miniature golf and frolic in a butterfly garden. That's exactly what the **South Florida Science Center and Aquarium** has in mind for their latest five-acre campus expansion project. Plans will take advantage of the outdoor areas surrounding the Science Center, including the Conservation Course, an interactive trail in the backyard and the shared fence line with the **Palm Beach Zoo**.

These updates are part of the third phase of an expansion initiative. The first two phases focused on adding exhibit space and renovations. "We kept our promises to the people on the first two phases, and now it's time to focus our efforts on the rest of the grounds which have so much potential," said **Lew Crampton**, President and CEO of the Science Center. The planned **Science Trail** is an eight-foot wide surface that will wind through the grounds and connect to the new Garden Club and Amphitheater buildings. An observation deck overlooking the Palm Beach Zoo will allow guests to see the wild bird shows, helping to integrate the Zoo and the Science Center's activities. Interactive exhibits along the Science Trail will include a **Physics Forest** to encourage experimentation, integrating into the Science Trail's natural landscape for exploration and relaxation. The plans include a deck which overlooks key habitat features and wildlife native to the area with dense vegetation promoting a "jungle" feel. A run-through fountain will keep guests cool on hot days and an outdoor presentation space will accommodate evening movies for extra cool nights. "This expansion creates a playful learning environment dedicated to science and education with an emphasis on Florida's natural environment," Crampton said. "It's growing our mission to 'open every mind to science' and inspiring people of all ages to explore the world around them."

"We are so grateful to those who supported the backyard initiative, most especially **Frances Fisher**, whose vision for the expansion provided the leadership model which inspired additional sponsors including the **Batchelor Foundation, Florida Power and Light, Rick and Lotsie Holton, Michael Flagler Matthews Sports Education Fund, PNC and Weyenberg Foundation**," said **Marcy Hoffman**, Director of Institutional Advancement.

Since the expansions started, the Science Center has been voted the **Best Museum of Palm Beach County** from the readers of *South Florida Parenting Magazine* and the Chamber of Commerce of the Palm Beaches has named it the **Nonprofit of the Year**.

The Science Center is currently home to the blockbuster exhibit, *Our Body*:



Families enjoy the Conservation Course, an 18-hole miniature golf course situated among a butterfly garden, koi pond and water features

*The Universe Within*, where guests can see and understand how their bodies function. The exhibit returns to its permanent home in China April 23rd. The newly-opened Conservation Course is a miniature golf course settled into a tranquil butterfly garden designed by **Page Lee Hufty**.

The mission of the South Florida Science Center and Aquarium is to "open every mind to science" and the indoor/outdoor venue includes more than 100 hands-on educational exhibits, a 10,000 gallon fresh and salt water aquarium — featuring both local and exotic marine life, a digital planetarium, conservation research station, Florida exhibit hall, Pre-K focused Discovery Center, an interactive Everglades exhibit and the 18-hole Conservation Course — an outdoor putting course with science-focused education stations.

For more information on the expansion or current exhibits, including *Our Body: The Universe Within* or the Conservation Course call 561.832.1988 or visit [www.sfsiencecenter.org](http://www.sfsiencecenter.org).



YOUR CULTURAL CALENDAR FOR THIS WEEK

# 3 TO SEE

## Schedule your season – with our help

It's the season – time for the best cultural events our community has to offer.

Each week, the Cultural Council of Palm Beach County offers you three ideas: one that's free, one that's affordable and one that's a splurge.

Your "3 to See" cultural curator is Rena Blades, president and CEO of the Cultural Council.

### COMING TOMORROW: THE TO DO LIST

#### Your guide to weekend fun



The human body can be explored, in intricate detail, starting this weekend at the "Our Bodies: The Universe Within" exhibition at South Florida Science Center and Aquarium. CONTRIBUTED

#### DEAL

**Body of science**  
In 1855, the poet Walt Whitman opined that "if anything is sacred, the human body is sacred" in his famous piece "Sing the Body Electric," and we continue to explore that

fascination today. The physical vessels of humankind decorate the halls of the South Florida Science Center and Aquarium for an exhibition titled "Our Body: The Universe Within." They're neither alive nor cadaverous,

thanks to a form of preservation called "polymer integration," which allows visitors to explore organs, bones, muscles and blood vessels up-close and personal. "Our Body: The Universe Within:" Through April 23.

Admission is \$16.95 for adults, \$14.95 for seniors and \$12.95 for children ages 3-12. South Florida Science Center and Aquarium, 4801 Dreher Trail North, West Palm Beach. Information: 561-832-1988; www.sfsiencecenter.org



Follow the reign of Queen Elizabeth II (played by Karen MacDonald) and her prime ministers live on stage at Maltz Jupiter Theatre in a play titled "The Audience," which premieres this weekend. CONTRIBUTED

#### SPLURGE

##### Play of thrones

Despite losing press coverage to her spotlight-stealing grandchildren and great-grandchildren – just kidding, Charlotte and George, you're adorable – the fact remains that Queen Elizabeth II has reigned over the U.K. for nearly 65 years. In that time, she's been served by a dozen prime ministers from Winston Churchill to "Iron Lady" Margaret Thatcher. Their conversations and private meetings are detailed in fictional form in a play titled "The Audience," which opens this weekend at Maltz Jupiter Theatre. "The Audience:" Runs through Nov. 6. Tickets start at \$56. Maltz Jupiter Theatre, 1001 East Indiantown Road, Jupiter. Information: 561-575-2223; www.jupitertheatre.org



The traveling multimedia art exhibition, "Question Bridge: Black Males," can be seen now at the Norton Museum of Art in West Palm Beach. CONTRIBUTED

#### FREE

##### "Question Bridge: Black Males"

The arts provide a platform for people to speak freely about race, ethnicity and gender. This is precisely why artists from around the United States have collaborated on an interactive multimedia project that explores what it means to be a black man in modern America. "Question Bridge: Black Males," on display now at the Norton Museum of Art, includes more than 1,600 questions and answers, recorded on video, from more than 160 men in nine American cities. "Question Bridge: Black Males:" Through Dec. 18. Norton Museum of Art, 1451 S. Olive Ave., West Palm Beach. Information: 561-832-5196; www.norton.org

#### Play

continued from D1

Shannon as her husband's successor.

Soon after Hannah arrives with her aged grandfather Nonno. The two have been traveling the world trading on recitations of Nonno's poems and sales of Hannah's sketches and water-

#### IF YOU GO

**"The Night of the Iguana"**

When: Through Nov. 13

Where: Palm Beach Dramaworks, 201 Clematis St., West Palm Beach

More info: 561-514-4042 or palmbeach-dramaworks.org

colors. Except now, sales have dried up.

Shannon and Hannah recognize each other as kin-

dred spirits, even as Shannon shatters. Maxine lashes out to defend her territory and Nonno dwindles. The story plays out within a framework of majestic nature and an indifferent heaven, lushly evoked by Williams' poetic language and Michael Amico's set. Paul Black's lighting and Matt Corey's sound design.

Tim Altmeyer gives a devastating performance as he charts Shannon's near crack-up. Kim Cozort Kay sashays the stage as Maxine with bullet-proof determination. But more passion should glimmer from Katie Cunningham's coolly composed Hannah if she's to grip our hearts.

Standout players among the splendid supporting cast include Irene Adjan as the waspish chaperone, David Nail as a smarmy tour guide, and Brian Varela and Thomas Rivera playing Maxine's well-muscled boy toys. Compassion and connection are the palliatives Williams offers in the play, but there's one more thing that soothes us. That's the beauty of art, which Dramaworks' production supplies in abundance.

jsjostrom@pbdailynews.com

#### Memoir

continued from D1

light-filled Singer Island condominium.

In the book, Springsteen says Clemens was dogged by increasing health problems. He got his first hint that something might be seriously wrong when Clemens asked to postpone a recording session to return to Florida and consult with a neurologist about a worrisome numbness in his hand. Springsteen and his wife, Patti Scialfa, went on an anniversary vacation to Paris, where they were awakened by a teary-eyed assistant telling them Clemens had suffered a stroke.

Springsteen immediately flew to West Palm Beach the owns property in Wellington and wrote part of this memoir there, and went to Clemens' side. He learned the "massive" stroke had happened as Clemens fell out of bed at home. St. Mary's personnel were

"kind enough," Springsteen wrote, to give the family a nearby room where everybody gathered and passed around instruments and shared their memories of Clemens. As the week went by, a doctor told Springsteen it would take a miracle for him to recover, and that he would surely be wheelchair-bound and paralyzed.

"He certainly would have never played the saxophone again," Springsteen said in the book. "I don't know how Clarence would've handled this."

Springsteen wrote that "the morning sun laid a pinkish veil over the St. Mary's parking lot" as friends, family and E Street band members Max Weinberg and Garry Tallent arrived to see Clemens one last time. They stood beside his bed and Springsteen said he "strummed my guitar gently to 'Lands of the Living' Dreams" as Clemens passed.



Bruce Springsteen and his wife, Patti Scialfa, leave the Royal Poinciana Chapel in Palm Beach after a memorial service for Clarence Clemens in 2011. BRANDON KRUSE/THE PALM BEACH POST

ful sunny Florida day," and went swimming deep in the ocean to try to exhaust himself as he faced a suddenly inexplicable world without

#### CLEMENS ON 'BORN TO RUN' COVER

In 2005, Clemens talked to former Post reporter Anne Rodgers about his memories of "Born to Run." Here's an excerpt from that interview.

Question: What do you remember about that cover photo?

Answer: I set the pose up. I stood up and struck a pose, and Bruce leaned in on me. And it was perfect. When we're together it just happens that way.

Q: How do you feel about the cover shot today? (It splits the image, with Springsteen on the front and Clemens on the back.) A: It's kind of been a nemesis. My face was on the back. Why not on the front? What's up with that?



... The promotions all had the whole picture, it was a big thing showing brotherhood between black and white ... a big statement in rock and roll. I think Bruce really envisioned it would be the whole cover, but somewhere along the line it got changed. I was disappointed, but it was OK. What was inside was better than what was on the outside. We moved on.

his friend and cohort. At the memorial service

at Palm Beach's Royal Poinciana Chapel, Springsteen

wrote that "the thick Florida air filled my lungs with cotton ...." Attending: The whole band, Clemens' wives, Jackson Browne (who had a hit duet single with Clemens) and Eric Meola, the man who photographed the "Born to Run" cover. Clemens wanted his ashes taken to Hawaii with his wife and the women who meant the most to him, an idea that Springsteen said was something only Clemens could manage.

In the memoir, Springsteen writes movingly about how they met, bonded and bridged the black-white divide, not always easily, to create something "transcendent" together. "Clarence was elemental in my life and losing him was like losing the rain.

"I miss my friend," Springsteen wrote in conclusion. "But I still have the story he gave me ... and that story is going to carry on."

laydette@pbpost.com

Located on Lyons Road & W. Allain Avenue  
3<sup>rd</sup> Annual

# Delray Marketplace Art & Craft Festival

in Delray Beach, FL

Official Food Drop Off Site For:

October 29<sup>th</sup> & 30<sup>th</sup>  
Saturday & Sunday 10am - 5pm

Free Admission

For more information, call 561-746-6615  
14851 Lyons Road in Delray Beach